

LAND CERTIFICATE NO. 38487 COPY

Land Certificate No. 38487 Tulcea

A. Part I. Property description LAND

within the built-up area

Address: Loc. Tulcea, Str ISACCEI, Nr. FN, Jud. Tulcea, Delta Park

Item no.	Cadastral number Topographic number	Surface* (sqm)	Observations / References
A1	38487	3,256	

B. Part II. Owners and documents

Entries regarding property rights and other real rights		References
14256 / 10/03/2014		
Administrative Act no. 98, dated 31/05/2012 issued by the Local Council of Tulcea Municipality;		
B1	Tabulation, PROPERTY right, acquired by law, current share 1/1, initial share 1/1	A1
	1) TULCEA MUNICIPALITY, public domain	

C. Part III. ENCUMBRANCES.

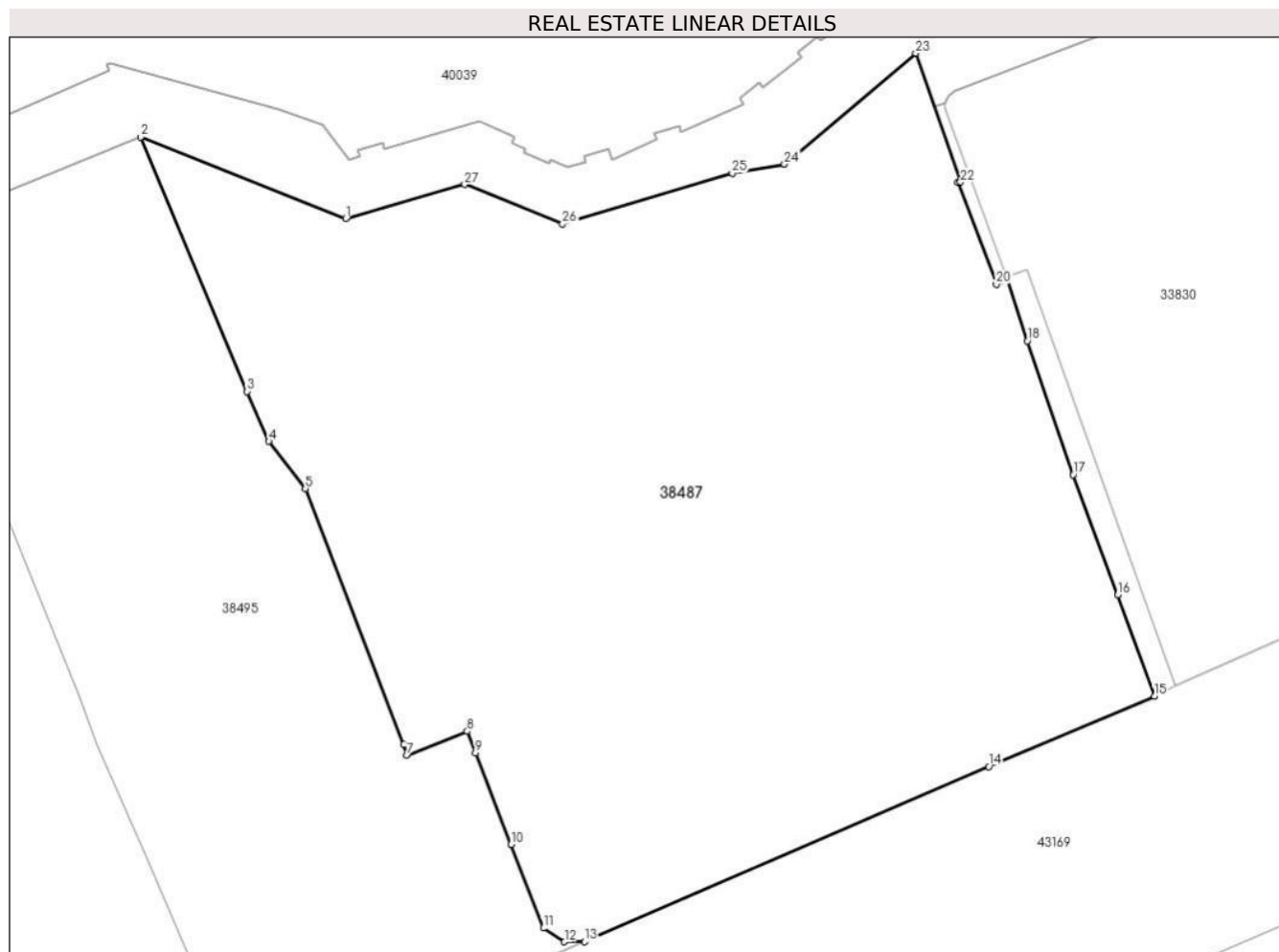
Entries regarding dismemberment of property rights, real rights of guarantee and encumbrances	References
NOT EXISTING	

Annex No. 1 To Part I

Land

Cadastral no.	Surface (sqm)*	Observations / References
38487	3,256	

* The surface is determined in the Stereo 70 projection plane.



Land related data

Item no.	Usage category	Land within the built-up area	Surface (sqm)	Strip land	Lot	Topographical no.	Observations / References
1	construction yards	YES	3,256	-	-	-	

Segments length

1) The segment length values are obtained from the plan projection.

Start point	End point	Segment length (** (m))
1	2	17,704
3	4	4,376
5	6	22,052
7	8	5,214
9	10	7,891
11	12	2,015

Start point	End point	Segment length (** (m))
2	3	22,179
4	5	4,783
6	7	0,898
8	9	1,844
10	11	7,214
12	13	1,634

Start point	End point	Segment length (** (m))
13	14	35,392
15	16	8,661
17	18	11,357
19	20	0,919
21	22	0,212
23	24	13,802
25	26	14,228
27	1	9.94

Start point	End point	Segment length (** (m))
14	15	14,461
16	17	10,316
18	19	5,147
20	21	8,735
22	23	10,961
24	25	4,273
26	27	8,503

** Segment lengths are determined in the Stereo 70 projection plane and are rounded to 1 millimeter.

*** The distance between the points is made up of cumulative segments that are smaller than the value of 1 millimeter.